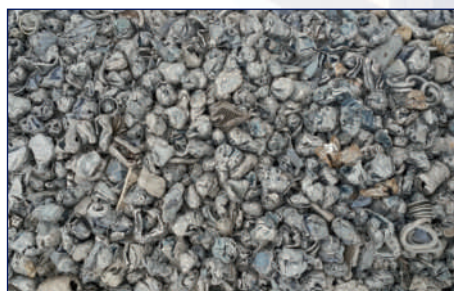
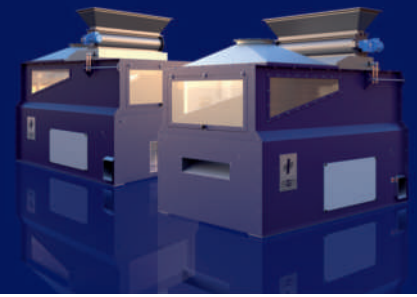


### Typical Applications

- Separation of light metals (aluminum and magnesium) from heavy metals (copper, brass, zinc, lead,...)
- Fine zorba from 1 to 20 mm



# Pressure Density Separator Model PDS



## Technical Specifications

The SGM PDS separator is an air gravity table suitable to separate particles featuring different densities between a light and heavy fraction.

The dryness, but also the size and shape of the material are also important factors that may require the material to be screened in specific size ranges. The vibrating motion of the deck is such that material is invited to climb up the deck but material is also exposed to a constant and evenly distributed upward air flow that makes that the light fraction levitates, overcome the climbing action and goes down the deck.

Material is fed and distributed among the entire width of the inclined vibrating deck. Material is exposed to a constant and evenly distributed air flow that makes the light fraction levitates. The light particles of the material flow towards the bottom and the heavier mass particles move towards the top. Both materials are conveyed separately. As an option, the dust discharged in the air can be collected and filtered through a cyclone and a baghouse filter.

## Product Highlights

- Highly robust perforated steel air table
- Improved material selectivity
- Maximum efficiency and reliability
- Easy access for cleaning and maintenance procedures

## Optional Features

- Dust cyclone and a baghouse filter
- Customized supply of a separation line according to customer's requirements



MODEL	CAPACITY t/h (*)	INSTALLED POWER WITHOUT FAN HP	FAN CAPACITY CFM	FAN PRESSURE WC inch	FAN ESTIMATED HP	MODEL	LENGTH mm	HEIGHT mm	WIDTH mm	WEIGHT Kg	TABLE SURFACE mm
PDS 4	1 - 3	1.55 kW - 2.07 HP	2354	6.7	5	PDS 4	2108	2286	1346	1,550	970 x 835
PDS 6	3 - 5	2.35 kW - 3.15 HP	2943	10.5	8	PDS 6	2718	2700	1800	3,100	1470 x 1250
PDS 8	4 - 7	2.95 kW - 3.95 HP	3414	12.2	10	PDS 8	3200	2997	2133	3,400	1778 x 983
PDS 10	6 - 9	3.35 kW - 4.49 HP	4238	15.7	15	PDS 10	3683	3213	2311	5,420	2100 x 1800

\* Depending on application, material specific weight and metal content material

SGM Magnetics SpA  
Separation and Recycling  
Via Leno 2/D Manerbio, BS Italy, 0039 0309938400  
info@sgmmagnetics.com www.sgmmagnetics.com

